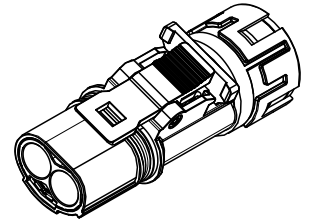
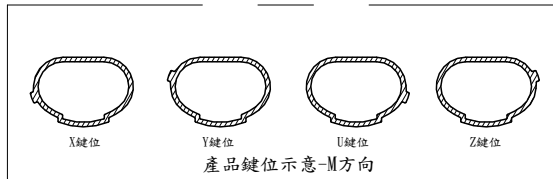
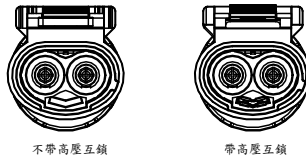
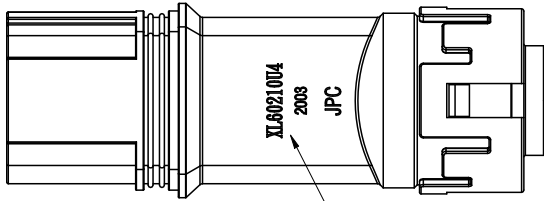
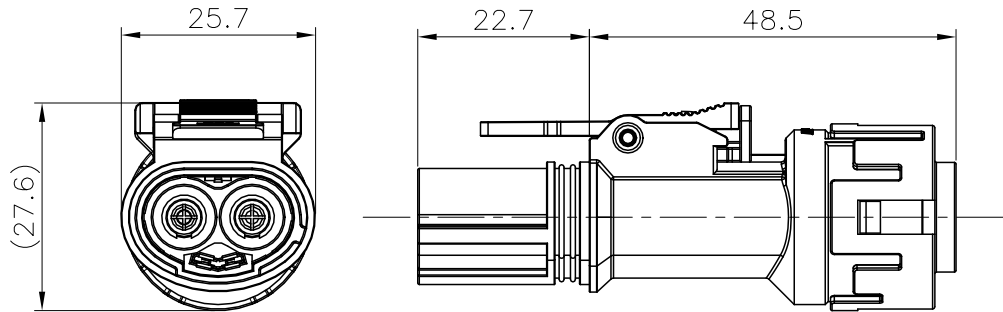


1			2		3		4		5		6		7		8		
			THIS DRAWING AND THE DATA DISCLOSED HEREIN OR HEREWITH IS NOT TO BE REPRODUCED USED OR DISCLOSED IN WHOLE OR IN PART TO ANYONE WITHOUT THE PERMISSION OF JESS—LINK PRODUCTS CO.,LTD.(JPC)				CUSTOMER DRAWING DRWC—000484				REV.	ECN NO.	DESCRIPTION		MDF'D	APP'D	DATE
											01		INITIAL DESIGN		Brady	Richard	11/04/2020
											02		MODIFY THE NOTE		Brady	Richard	03/02/2022
											03		MODIFY THE NOTE		Brady	Jason	01/05/2024

THIS DRAWING AND THE DATA DISCLOSED HEREIN OR HEREWITH IS NOT TO BE REPRODUCED USED OR DISCLOSED IN WHOLE OR IN PART TO ANYONE WITHOUT THE PERMISSION OF JESS-LINK PRODUCTS CO.,LTD.(JPC)

CUSTOMER DRAWING
DRWC-000484



Standard Part List(Without HVIL)

Model No.	Accepted Wire Size
PHVXL60210X4-0	4mm ² 屏蔽線纜 (ϕ 10.8-11.1mm)
PHVXL60210Y4-0	
PHVXL60210U4-0	
PHVXL60210Z4-0	
PHVXL60210X6-0	6mm ² 屏蔽線纜 (ϕ 12.2-12.5mm)
PHVXL60210Y6-0	
PHVXL60210U6-0	
PHVXL60210Z6-0	

Standard Part List(With HVIL)

Model No.	Accepted Wire Size
PHVXL60211X4-0	4mm ² 屏蔽線纜 (ϕ 10.8-11.1mm)
PHVXL60211Y4-0	
PHVXL60211U4-0	
PHVXL60211Z4-0	
PHVXL60211X6-0	6mm ² 屏蔽線纜 (ϕ 12.2-12.5mm)
PHVXL60211Y6-0	
PHVXL60211U6-0	
PHVXL60211Z6-0	

NOTES :

- 工作溫度Operating temperature : -40°C-125°C.
- 額定電流Current rating : 40A(Cross-sectional area is 4mm²).
45A(Cross-sectional area is 6mm²).

The test ambient temperature is 22±1 degrees.

- 額定電壓Operating Voltage : 1000 VDC.
- 耐電壓Dielectric withstanding Voltage : 5000 VDC.
- 防護等級Protection class : IP67.
- 電磁屏蔽Shielding.
- 機械壽命Mating cycle : 100 Min.
- 帶自動二次鎖扣Automatic secondary lock.
- 帶高壓互鎖Electrical interlock(HVIL)(可選)
- 配對插座Mating plug : PHVXL6020XXX-0

料號信息 P/N information

PHVXL6021 X X X-0

高壓互鎖

0. 不帶高壓互鎖

1. 帶高壓互鎖

鍵位

"X"

"Y"

"U"

"Z"

線纜大小

"4"=4mm²

"6"=6mm²

印字信息

XL60210U4 — 料號信息

YYWW — 生產年月:前兩碼取"年份"後兩碼為"週數"

JPC

RoHS COMPLIANT	Unit: mm(inch)	PROJECTION 	JPC connectivity		
	GENERAL TOLERANCES: (UNLESS SPECIFIED)	D.R. 11/04/2020 Brady	TITLE XL60 2POS PLUG CONNECTOR	PD./FILE NO. C19C0007A	REV. 03
	0 = ±1 (0.039) 0.0 = ±5 (0.02) 0.00 = ±3 (0.012) 0.000 = ±15(0.006) 0° = ± 2° 0.0° = ± 1°	CH.K 11/04/2020 Albert			
		APV.D 11/04/2020 Richard	SCALE 1:1	SHEET 1 OF 1	
			SIZE A4	PART NO. PHVXL6021XXX-0	